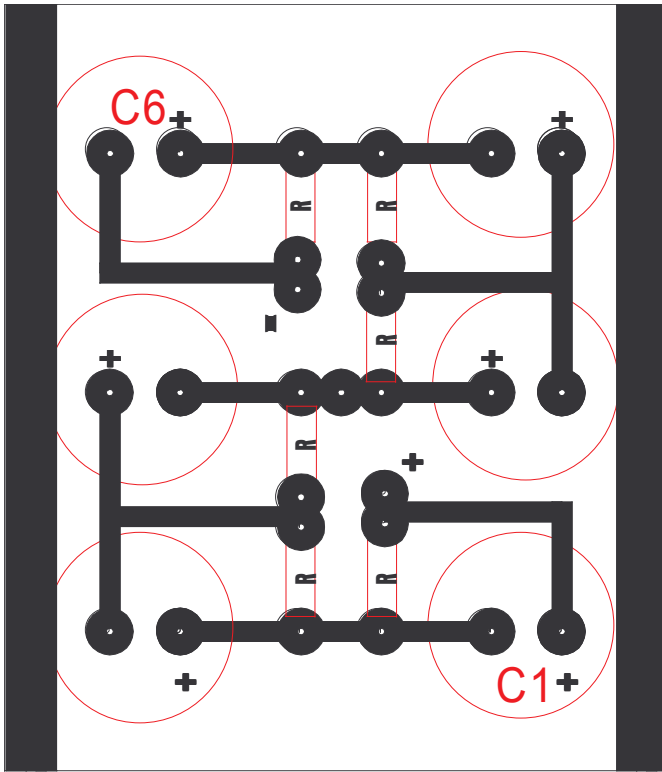


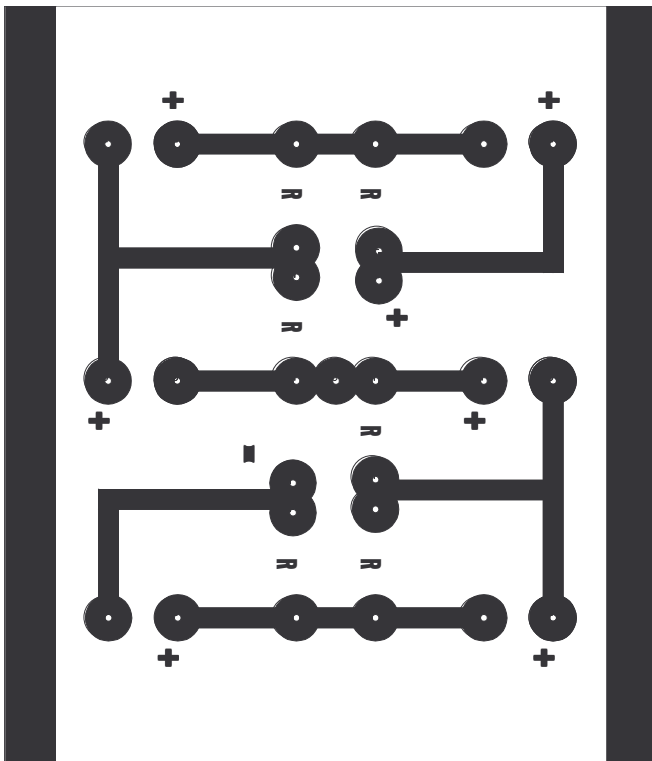
Diagram 2: PC capacitor board showing parts location and foil side. NOT TO SCALE

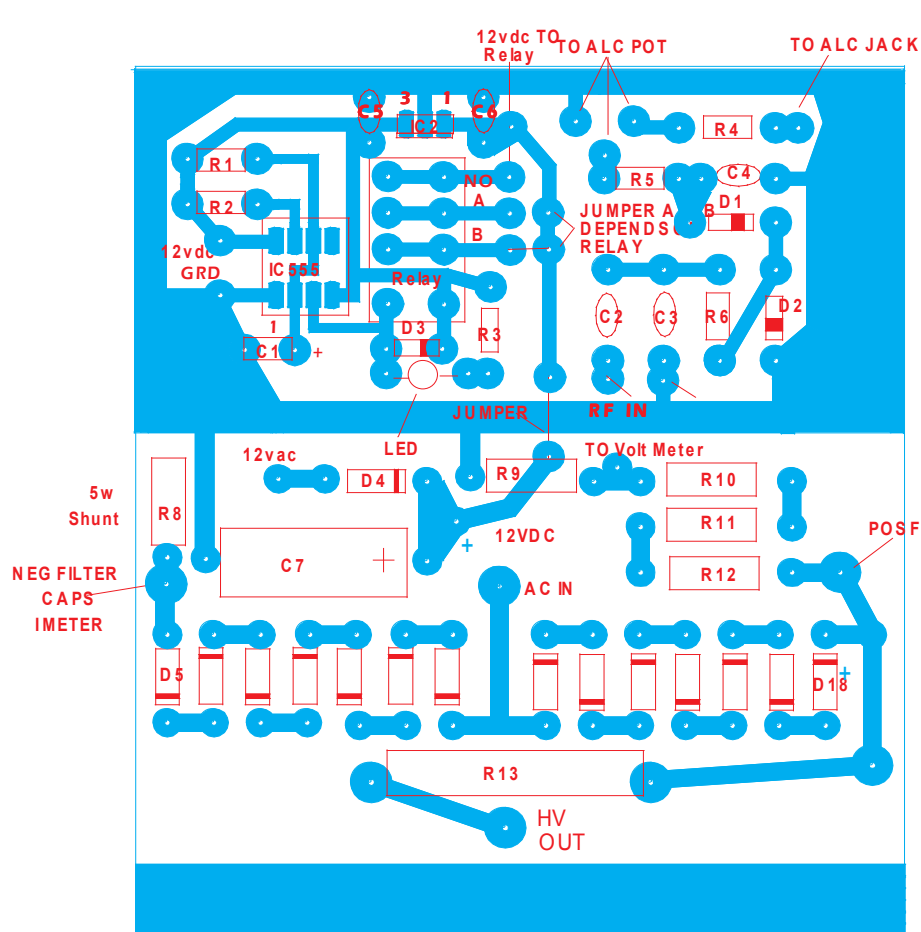


PARTS SIDE

C1-C6
220MFD 450VDC

R1-R6
100K 3W
FLAMEPROOF





NOTE:
 JUMPER A or B
 DEPENDS ON
 RELAY
 FOR 12Vdc

Diode Board w/o bias Circuit Voltage Doubler, Timer and ALC

Parts List

- R1 1 Meg
- R2 10K
- R3 680 Ohms
- R4 12K
- R5 27K
- R6 1K
- R7 100K 2W Pot
- R8 Old Meter Shunt
- R9 100K 2W
- R10-R12 1 Meg 2W
- R13 20 Ohm 10W

All resistors 1/4
 unless noted

Foil Side

Parts Side

Parts List

- C1 47uf 35v electrolytic
- C2 47pf 100v ceramic disc
- C3 120pf 100v ceramic disc
- C4 .01uf 100V ceramic disc
- C5,C6 1uf 35v electrolytic
- C7 500uf 35v electrolytic
- D1,D2 IN4108
- D3,D5-D18 IN4007
- D4 IN5404
- IC1 LM555 timer
- IC2 LM7812 voltage regulator
- RLY DPDT 2A DIP relay
- LED Any color
 Board or Chassis Mount

